



AIR TORQUE

AIR TORQUE S.p.A.

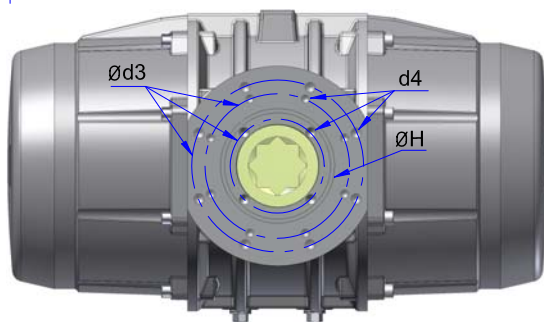
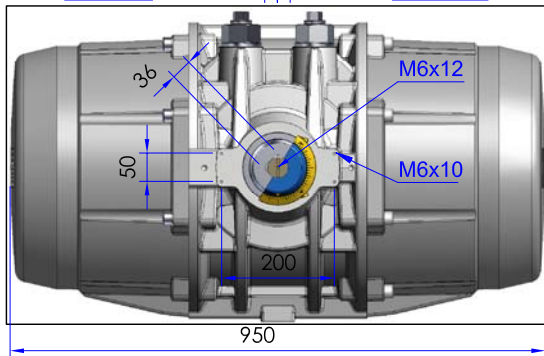
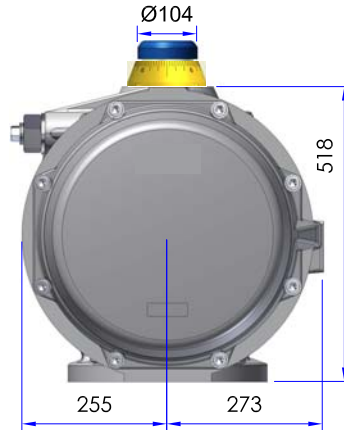
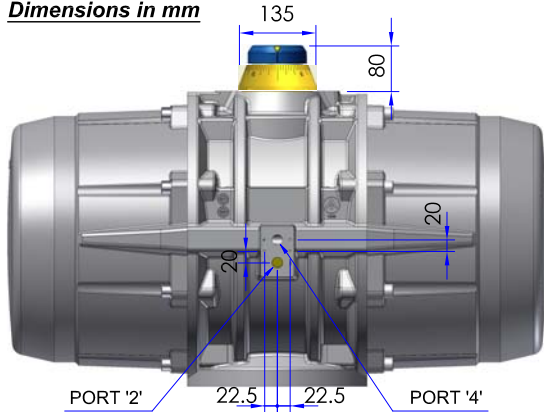
via Alla Campagna, N° 1
24060 Costa di Mezzate (Bg) Italy
Tel.: +39 035 682299
Fax: +39 035 687791
E-mail: info@airtorque.it



Model AT1001 U
D/S - 90°

TDS n° AT1001U-DM
Issued on: 10/09 - Page 1/1

Dimensions in mm

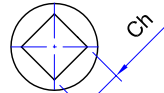


Optional Square:

"L"
Single Parallel square



"D"
Single Diagonal square

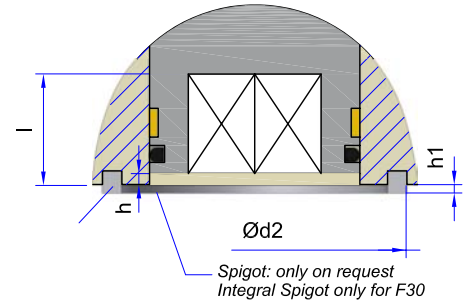


"DS"
Double square



ISO 5211 Flange Dimensions

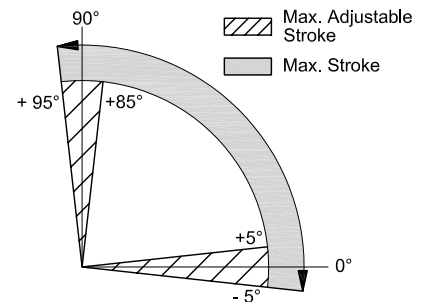
ISO 5211	STD	OPTIONAL
	F16 + F25 + F30	F30
Ø d2	200 (F25)	230
Ø d3	298	298
Ø d3 A	254	NA
Ø d3 B	165	NA
d4	M20x30	M20x30
d4 A	M16x24	NA
d4 B	M20x30	NA
Ø H	200	NA
Ch x l	75x77	
min. DS	55x59 - 75x80	
h min.	2,5	2,5
h1	4	2



Connection / Attachment

Pressure connection: Port 2 and 4	G1/2"
Ancillary Attachment STANDARD	AA 5
Only on request with additional adapter plate	AA 4

Rotation and stroke adjustment



Output Torque

Press.	OUTPUT TORQUE FOR DOUBLE ACTING IN Nm										APPROX. WEIGHT (Kg) (c)
	2,5 bar	3 bar	3,5 bar	4 bar	4,2 bar	4,5 bar	5 bar	5,5 bar	6 bar	7 bar	Aluminium Drive Shaft
0° 90°	4169	5003	5837	6671	7005	7505	8339	9173	10007	11674	

Press.	OUTPUT TORQUE FOR SPRING RETURN IN Nm												Spring stroke	APPROX. WEIGHT (Kg) (c)							
	2,5 bar	3 bar	3,5 bar	4 bar	4,2 bar	4,5 bar	5 bar	5,5 bar	6 bar	7 bar	8 bar	All. Drive Shaft									
0° 90°	2474	1695	3308	2529	4142	3362	4976	4196	5310	4530	5810		5030	6644	5864			2475	1695	199	
S 05	Start	End	Start	End	Start	End	Start	End	Start	End	Start	End	Start	End	Start	End	Start	End	2970	2034	204
S 06	2135	1200	2969	2034	3803	2867	4637	3701	4971	4035	5471	4535	6305	5369	7139	6203			2970	2034	210
S 07			2630	1539	3464	2373	4298	3206	4632	3540	5132	4040	5966	4874	6800	5708	7633	6542	3465	2373	210
S 08					3125	1878	3959	2711	4292	3045	4793	3545	5627	4379	6461	5213	7294	6047	3960	2712	216
S 09					3620	2217	3953	2550	4454	3050	5288	3884	6122	4718	6955	5552	8623	7220	4455	3051	221
S 10									4115	2555	4949	3389	5783	4223	6616	5057	8284	6725	4949	3390	227
S 11											4610	2894	5444	3728	6277	4562	7945	6230	5444	3729	233
S 12													5105	3233	5938	4067	7606	5735	5939	4068	238

Technical Data

Max. Pressure	Rotation	Screw stroke Adjustment	Chamber Ø (mm)	Air Volume (L)		Moving Time (Sec.) (A)	
				Opening	Closing	Opening	Closing
D = 7 bar S = 8 bar	0° - 90°	For 1° adj. need 1/6 Turn	420	49	84	D 8 S 10	D 9 S 11

Operating Temperature Range

Operating Temperature (°C) (B)		
ST (standard)	HT (high temperature)	LLT (Extreme low temperature)
- 40 to + 80	- 15 to + 150	- 55 to + 80

A) - The above indicated moving time of the actuator is obtained in the following test conditions: (1) Room Temperature, (2) Actuator Stroke 90°, (3) Solenoid Valve with Orifice Of 11 mm and a flow capacity Qn 6000 L/min., (4) Inside pipe diameter 11 mm, (5) Medium clean air, (6) Air supply pressure 5,5 bar (79,75 Psi), (7) Actuator without external resistance load. **Caution: obviously on the field applications when one or more of the above parameters are different, the moving time will be different.**

B) - Every temperature range option requires proper components and lubricant. See technical data-sheet N° T.D.S. U00501E.

C) - For actuator with **Stainless Steel Pinion** add 31 Kg approximate weight.

Operating Medium:

The operating medium must be free of dust and oil. The maximum particle size must not exceed 30µ (ISO 8573 Part1, Class5). In order to prevent water condensation and/or solidification (ice when actuator works below 0°C), the operating medium must have a dew point equal to -20°C or at least 10°C below the ambient temperature (ISO 8573 Part1, Class3).